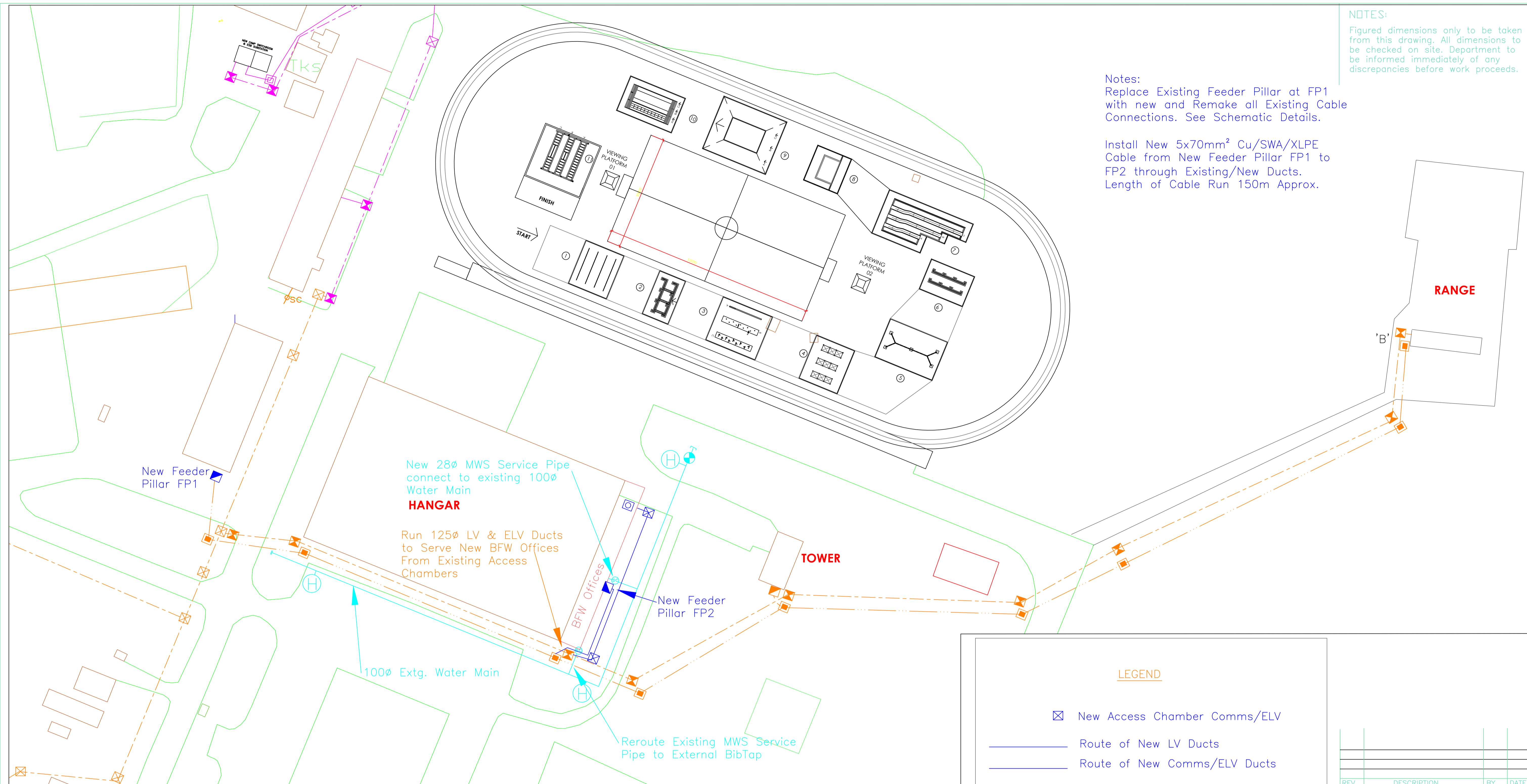


NOTES:
 Figured dimensions only to be taken from this drawing. All dimensions to be checked on site. Department to be informed immediately of any discrepancies before work proceeds.

Notes:
 Replace Existing Feeder Pillar at FP1 with new and Remake all Existing Cable Connections. See Schematic Details.

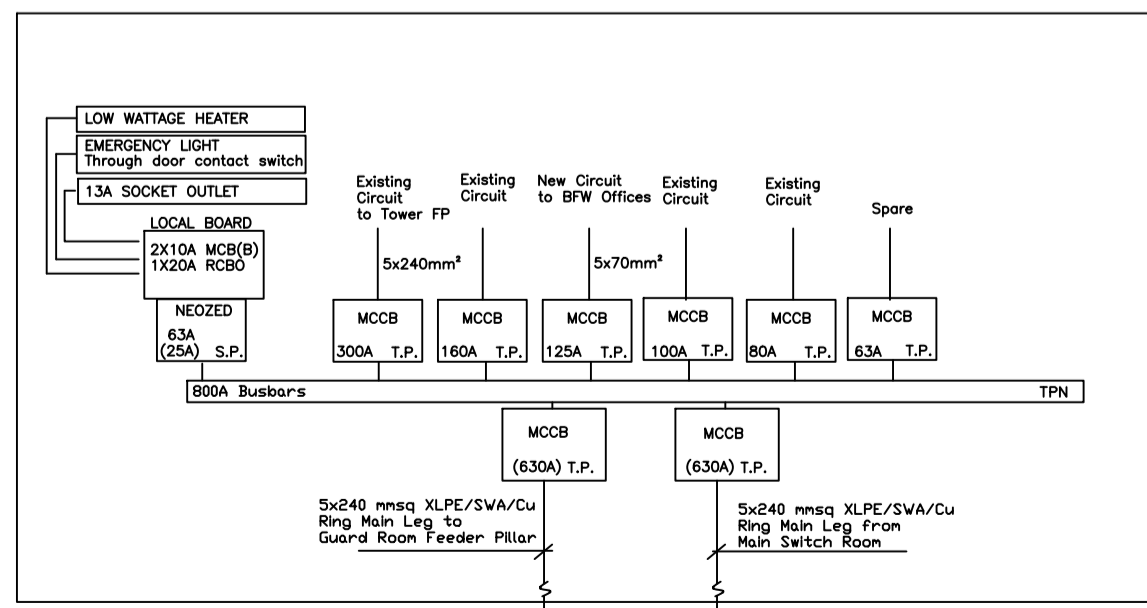
Install New 5x70mm² Cu/SWA/XLPE Cable from New Feeder Pillar FP1 to FP2 through Existing/New Ducts. Length of Cable Run 150m Approx.



LEGEND

- ⊠ New Access Chamber Comms/ELV
- Route of New LV Ducts
- Route of New Comms/ELV Ducts
- ⊠ New Comms Patch Panel
- New Electrical Feeder Pillar
- ⊠ Existing Access Chamber Comms/ELV
- ⊠ Existing Access Chamber LV
- - - - - Route of Extg. Comms/ELV Ducts
- - - - - Route of Extg. LV Ducts
- Route of Extg. 100ø Water Pipe
- ⊕ Extg. Fire Hydrant

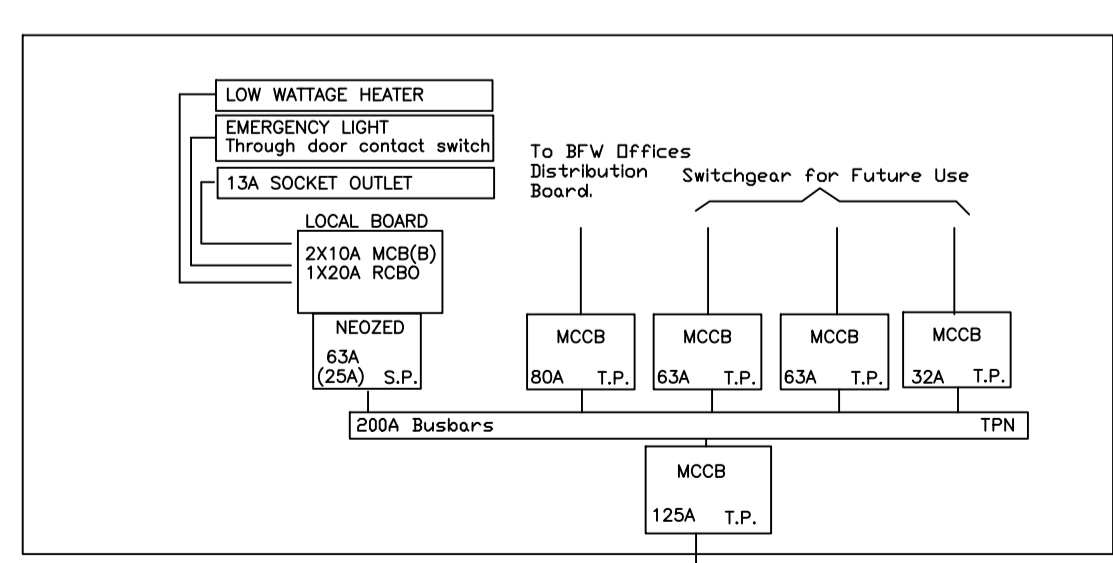
New Feeder Pillar FP1



Mini-Pillar to comprise:-
 Stainless Steel Enclosure to IP67
 Fully Prewired
 Full Neutral and Earth
 Light c/w Emergency Pack
 Heater
 1No. 2-Gang 13amp Socket with power-on at Pillar
 Removable Flash Guard (Note to be removable with power-on at Pillar)
 Rodent Proof Enclosure with Steel Floor Plate
 Key Lockable Door
 Provide Space for 25% additional Future Capacity.

Note:
 Cable Colour Coding is not consistent owing to age of cables. Check actual Phasing etc. before making any connections.

New Feeder Pillar FP2



Mini-Pillar to comprise:-
 Stainless Steel Enclosure to IP67
 Fully Prewired
 Full Neutral and Earth
 Light c/w Emergency Pack
 Heater
 1No. 2-Gang 13amp Socket with power-on at Pillar
 Removable Flash Guard (Note to be removable with power-on at Pillar)
 Rodent Proof Enclosure with Steel Floor Plate
 Key Lockable Door
 Provide Space for 25% additional Future Capacity.

REV	DESCRIPTION	BY	DATE

Job title			
NEW BFW OFFICES AT GORMANSTON CAMP Co. DUBLIN			
drg.title			
SITE SERVICES LAYOUT			

scale	1:200	
drawn	checked	date
DDD	C.Carey Capt.	April 2026



drg.no.	rev
PDE-B14-85-304	